

Sponsored Activities:

- Paralympics/Wounded-Warriors of St. Mary's County
- NRA Women-on-Target
- Boy Scouts of America Venture Crew #1951
- Southern Maryland Practical Shooters

Affiliated Organizations:

- National Rifle Association (NRA)
- United States of America Shooting (USAS) Olympics Sponsorship
- National Shooting Sports Federation (NSSF)
- Boy Scouts of America (BSA)
 - Civilian Marksmanship Program (CMP)
 - Duck's Unlimited Conservation Group
- International Defensive Pistol Assn (IDPA)
- United States' Practical Shooters Assn (USPSA)

Newly upgraded ranges designed to 21st-century standards by nationally preeminent designer Clark Vargas.

Rifle Range Baffle-Structure:



Pistol Range Baffles – A View Downrange:



Club Contact Information:

Website: Sannerslake.org

E-mail: sannerslake@yahoo.com

Snail-Mail: SLSC

P.O. Box 1300

Lexington Park, MD 20636

Club-President:

John Mountjoy (301) 904-6156

Welcome to Sanner's Lake Sportsmen's Club



Established 1951

Rifle Range

Pistol Ranges

Shotgun Range

Archery Range

Clubhouse

Indoor Airgun Range

Fishing Lakes

Swimmers' Beach

Wildlife Conservation

SLSC is a not-for-profit corporation but is NOT tax-exempt.

The Club's Primary Objective:

- The primary goal of SLSC is to foster and promote outdoor sports, environmental and wildlife conservation, and public safety through education and other activities.
- SLSC welcomes shooters, archers, fishermen, sportsmen, and nature-lovers of all kinds to our membership. Although membership is currently limited to 600 regular-members, the public is made welcome to participate in our public matches and special events.
- SLSC has a non-discrimination policy in all of its programs and actively supports and sponsors outreach programs for youths (including economically disadvantaged youths) as well as supporting the Paralympics / Wounded-Warrior program for the shooting-sports.

Club Facilities & Activities:

Rifle Range:

110-yard fully-baffled range
8-firing lanes
Covered firing-line
Heated range-house

Matches:

NRA High-Power Rifle
Rimfire Silhouette
IR-50/50 Bench-Rest
Rifle Blackpowder Rifle Silhouette

Fishing-Ponds / Swimmers' Beach:

Three large ponds
Stocked and managed for sport-fishing
Catch-and-release policy
Sand-bottomed swimmer's beach
Buoyed-off at 6' depth

Archery Range:

6-lane range
10-60 yard target butts
NFAA range

Field-archery range

Matches Planned:

NFAA Field Archery
3D Archery

Pistol Ranges:

50-yard fully-baffled range
10-firing lanes
Covered firing-line

Matches:

NRA Precision Pistol
High-Power Rifle
Rimfire Silhouette
IR-50/50 Bench-Rest
Rifle Blackpowder Rifle Silhouette

Shotgun Range:

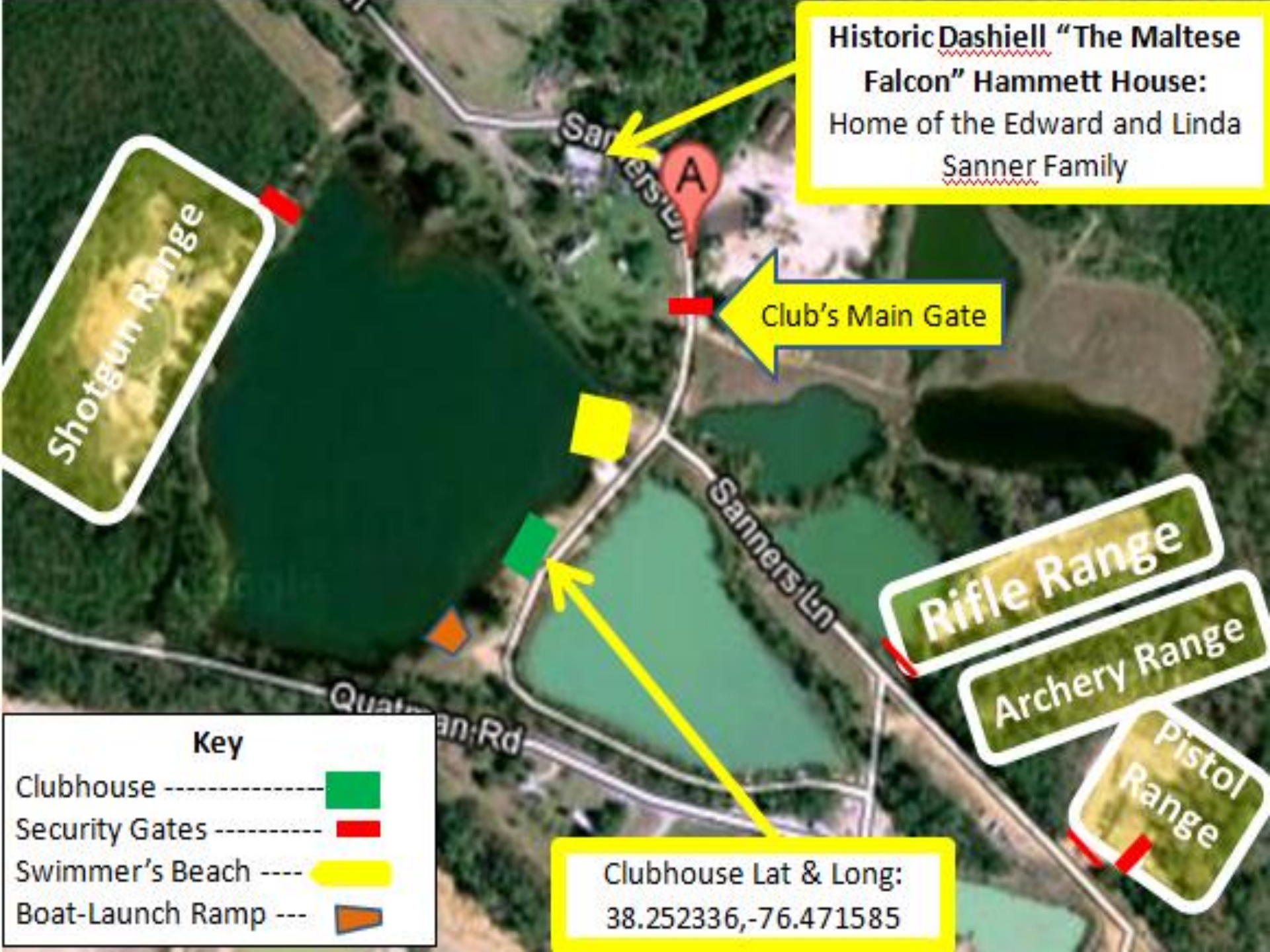
Trap Range
Skeet Range
Wobble-Trap
5-Stand
Sporting Clays

Matches:

Matches held Wednesday afternoons
and Sunday mornings/afternoons
Other days/times by special
arrangement

Air-Gun Range:

Indoor heated/cooled range
4 firing-lanes
Air-Pistol & Air-rifle
600 FPS maximum velocity
Matches:
10-meter rifle
10-meter pistol
Air-gun metallic silhouette



Historic Dashiell "The Maltese Falcon" Hammett House:
Home of the Edward and Linda Sanner Family





Club's Main Gate

Rifle Range

Archery Range

Pistol Range

Key

- Clubhouse ----- 
- Security Gates ----- 
- Swimmer's Beach ---- 
- Boat-Launch Ramp --- 

Clubhouse Lat & Long:
38.252336,-76.471585